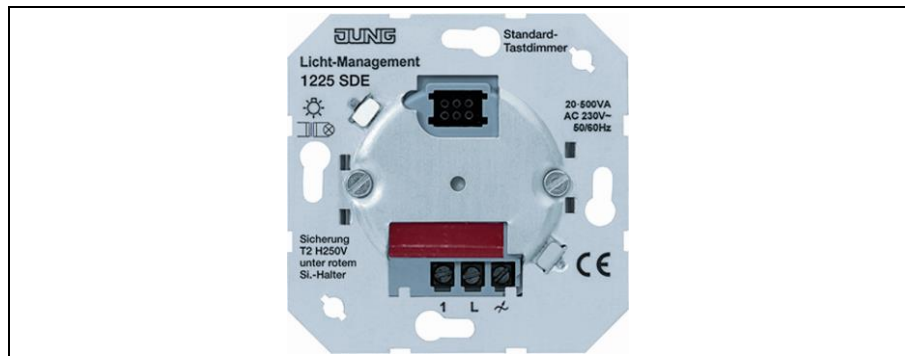


Operating Instructions Standard touch dimmer 20 – 500 W / VA



1. Warning

Attention: Electrical equipment must be installed and fitted only by qualified electricians and in observance of the applicable accident prevention regulations.

Not suitable for disconnecting.

When the standard touch dimmer is off the load is not electrically isolated from the mains.

When using conventional transformers, protect the primary side of each transformer by a fuse as indicated by the manufacturer. Only use safety transformers as per EN 61558-2-6.

Do not connect any electronic lamps, e.g. switchable or dimmable compact fluorescent lamps or LED lamps. Device can be damaged.

Non-observance of the installation instructions may cause fire or other hazards.



2. Function

Standard touch dimmer (phase cut-on dimmer) for switching and dimming extensive light sources such as:

- 230 V incandescent lamps.
- 230 V halogen lamps.
- LV halogen lamps in conjunction with conventional transformers.



The symbols used to identify dimmer loads designate the type or the electrical behaviour of loads connected to dimmers:
R = ohmic, L = inductive

Switching and dimming commands are given when the covers of the dimmer, of the extension or of the radio transmitter are actuated. The Standard touch dimmer works on the basis of the two-area principle, i. e. there is one touch area each for the 'brighter' and 'darker' dimming directions. The lights are turned on by a lamp-saving soft start. This Operating Instructions paper describes the functionality in combination with the manual short-stroke key. For the exact functionality in connection with the use of other attachments or of the remote control unit, respectively, please refer to the corresponding instructions.

Operation from the switched-off state:

Short touch (less than 400 ms):

UPPER or LOWER touch area or full area: ON

Longer touch (more than 400 ms):

UPPER touch area: Dimming from minimum to maximum brightness.

LOWER touch area: Turning on to minimum brightness.

Operation from the switched-on state:

Short touch (less than 400 ms):

UPPER or LOWER touch area or full area: OFF

Longer touch (more than 400 ms):

UPPER touch area: Increasing the light intensity to maximum (dimming up).

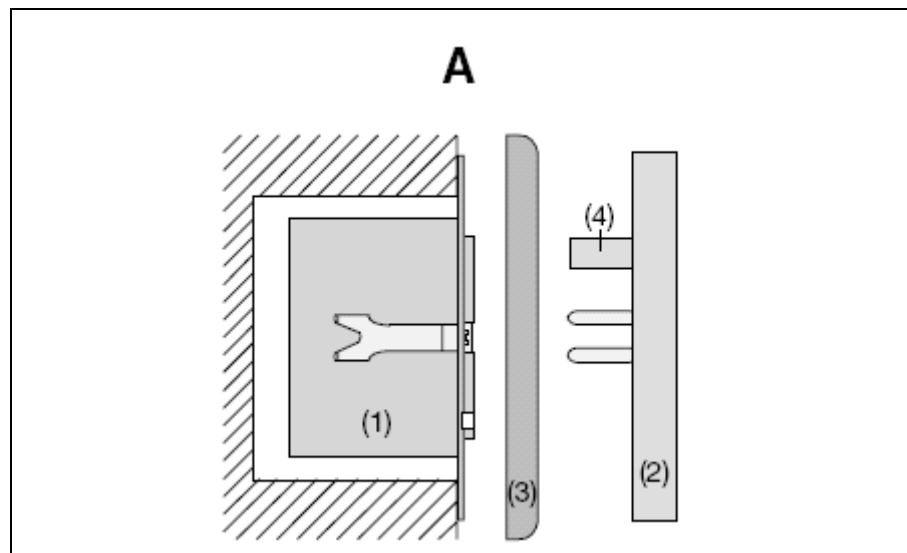
LOWER touch area: Decreasing the light intensity to minimum (dimming down).

Full-area operation (3 s min.):

The current brightness is stored and adjusted upon restarting (short actuation). The storing process is indicated by a soft start.

2.1. Installation Instructions

Fit standard touch dimmer (1) into a box as per DIN 49073 (Fig. A).



The connecting terminals of the insert must be at the bottom. Use the standard touch dimmer only in combination with an attachment. Plug attachment (2) onto the insert (3) together with frame (1). The electrical contact is established through plug (4). The standard touch dimmer consists of the dimmer insert and the plugged-on control or receiver part. Plug on the attachment prior to applying the mains voltage. Do not connect capacitive loads (e. g. Tronic transformers) to the standard touch dimmer. Mains failures of longer than 1 s will lead to switching off the dimmer and to the loss of the brightness value stored.

2.2. Short-Circuit Protection

T 2 H 250 microfuse. In case of malfunctioning, check the micro-fuse first. Do not use any fuses other than original.

2.3. Overtemperature Protection

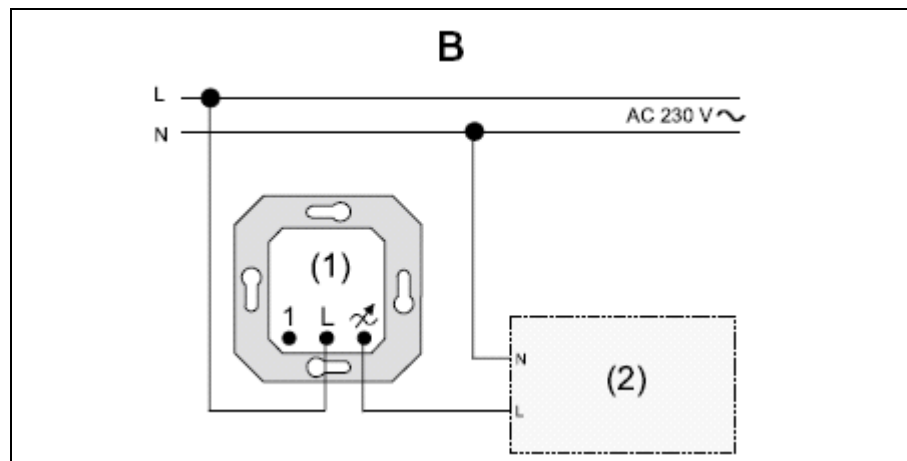
Switching off in case of an excessively high ambient temperature. After cooling down, the device must be switched back on.

- 230 V incandescent lamps, 230 V halogen lamps
- LV halogen lamps with conventional transformers.

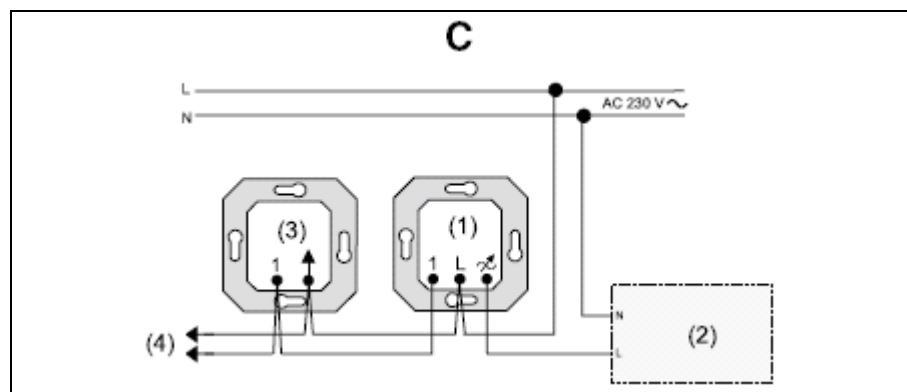
Load the transformers with lamps up to at least 85 % of their rated loads. The total load including the transformer power loss must not exceed 500 W/VA. The total power of the lamps connected must not exceed 500 W/VA. A minimum load of 20 W/VA is required, or the lamps connected may be caused to flutter. Depending upon the type of installation, the maximum connected load must be reduced by:

- 10 % per 5 °C exceeding of the ambient temperature of 25°C.
- 15% for installation in wooden, gypsum plaster or hollow walls.
- 20% for installation in multiple combinations.

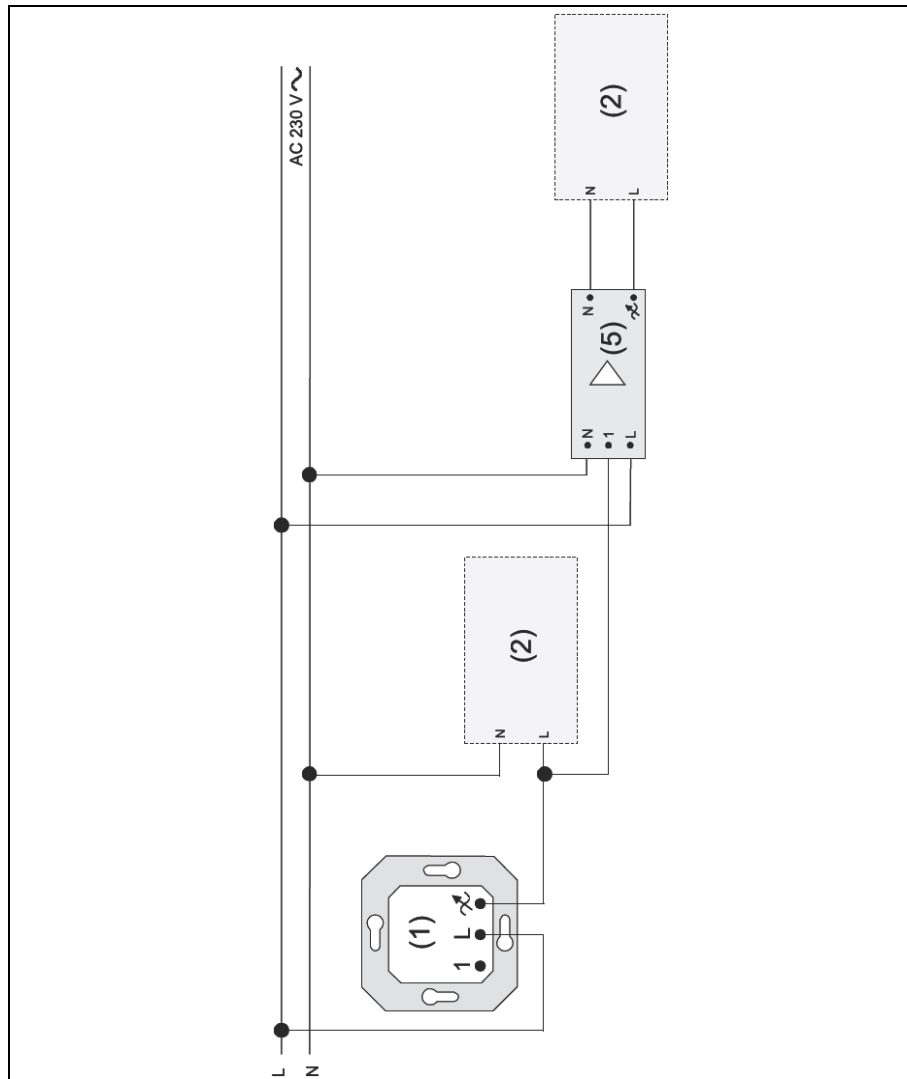
3. Connection



Connection as shown in fig. B



For dimming from several places, refer to Fig. **C** Power boost units can be connected to the standard touch dimmer to increase the load rating when the dimmer capacity is exhausted. Select a boost unit suited to the standard touch dimmer and to the load. Further details can be found in the operating instructions of the respective boost unit.



- (1) Standard touch dimmer
- (2) Load
- (3) extension
- (4) for further extensions
- (5) Power attachment EB (10 units max.)

Note the technical connection conditions of the power stations. Centralized telecontrol signals of the power stations may be noticed as flickering of the lamps. Possible low humming noise of the unit is caused by the interference suppression choke.

3.1. Using Extensions

“2-wire” extension insert:

The same functionality with an short lift key as on the standard touch dimmer.

Mechanical button (normally open):

Short push: ON/OFF.

Longer push: Dimming to maximum brightness.

Dwell time of approx. 1 s at maximum, then dimming down to minimum brightness. Dwell time of approx. 1 s at minimum, the dimming up to maximum brightness. This procedure repeats continuously. Storing any brightness value by the mechanical push-button (normally open) is not possible. Illuminated mechanical pushbuttons must have a separate N terminal. Control from an extension unit is possible only if the attachment on the main unit is in place.

4. Specifications

Rated voltage:	AC 230 V ~, 50 / 60 Hz
Connected load:	20 - 500 W/VA - 230 V incandescent lamps - 230 V halogen lamps - Conventional transformers - Mixed loads of the specified types.
Minimum load:	20 W/VA
Power boost units:	
EB:	10 units max.
Number of Extensions:	
„2-wire“ extension insert, mechanical push-button:	unlimited
„3-wire“ extension insert:	10

Different types of extension units can be combined. Total length of extension connecting cable: max. 100 m Basic brightness: factory-set As per EN 60669-2-1 (01.2000), some lighting of the lamp should be perceptible over the entire load range (at rated voltage – 10 %) when the dimmer is at dark position.

5. Guarantee

We accept the guarantee in accordance with the corresponding legal provisions.

Please return the unit postage paid to our central service department giving a brief description of the fault:


ALBRECHT JUNG GMBH & CO. KG
Service-Center
Kupferstr. 17-19
D-44532 Lünen
Service-Line: +(49) 23 55 . 80 65 51
Telefax: +(49) 23 55 . 80 61 65
E-Mail: mail.vka@jung.de

General equipment

Service-Line: +(49) 23 55 . 80 65 55
Telefax: +(49) 23 55 . 80 62 55
E-Mail: mail.vkm@jung.de

KNX equipment

Service-Line: +(49) 23 55 . 80 65 56
Telefax: +(49) 23 55 . 80 62 55
E-Mail: mail.vkm@jung.de

 The CE-Sign is a free trade sign addressed exclusively to the authorities and does not include any warranty of any properties.